



Frog Anatomy User's Guide

This simulation reviews the anatomy of a frog by system.

Keyboard Quick Reference

D Key: View or hide definitions/function

Ctrl + Q Key: Will invert the image if it goes out of sync.

* Click, hold, and drag the right mouse button to rotate manually.

ESC to exit simulation

Please see the instructions below for additional on-screen options.



From the starting view, the user may select a system by scrolling over the system tabs located in the bottom right corner of the screen. When the mouse rolls over the tabs, the system name is revealed; i.e. Exterior, Muscles, Bones or Internal Organs. Select the system by left clicking on the system tab when the name appears as shown below.

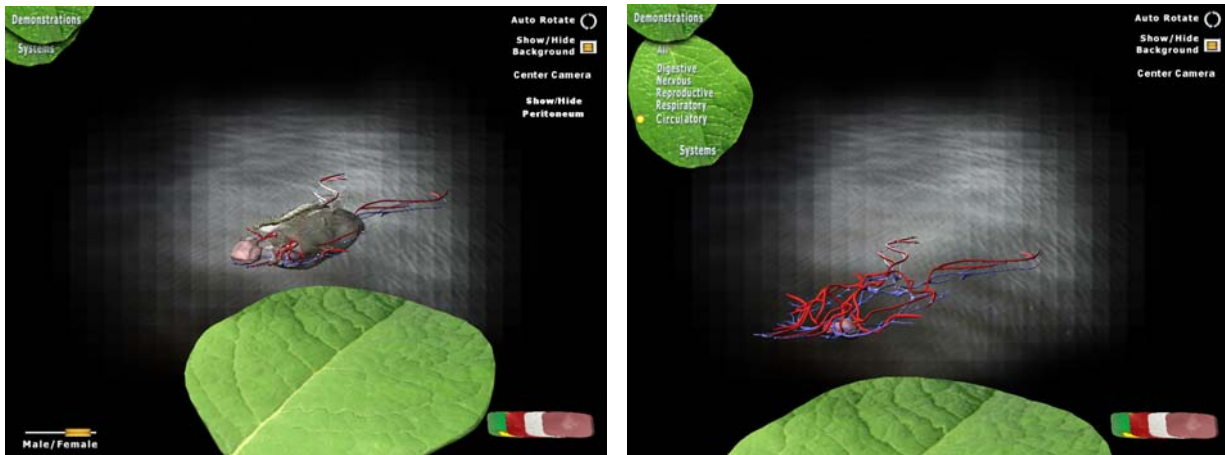


To identify the different parts of the system being viewed, roll the mouse over that part. Click the “D” key to view a definition/purpose of that part. Click “D” again to hide the definition. If “D” is left selected, the definition/purpose box will remain on the screen as you roll over the different parts.



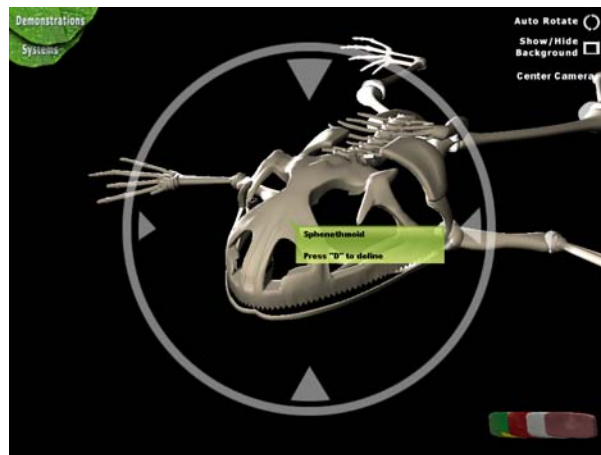
While in the “Organ” view, you may select the specific system from the “Systems” leaf tab located in the top left corner of the screen. Roll the mouse over the leaf to reveal the menu. Left click on the system you wish to view. This is demonstrated below.

Note: When viewing the reproductive system, and the exterior, a Male/Female selector will appear at the bottom left corner of the screen. Move the yellow bar to select the view of your choice.



To zoom in on the object displayed on the screen, use the mouse scroll button. A target will appear at its highest zoom level. To center a specific part in that target center, simply click that area of the frog and the view will be altered accordingly.

When viewing the organs, the peritoneum can be hidden by clicking on “**Show/Hide Peritoneum**” text found in the top right corner under “**Center Camera**”. This will only appear when the user is in the organ view.



Demonstrations

There are two frog demonstrations included in this simulation; Breathing, and Leaping.. To select a demonstration, roll the mouse over the “**Demonstrations**” leaf located in the top left corner of the screen. Left click on the demonstration that you would like to view. Left click on the right pointed arrow button, which signifies “play”, that appears on the bottom right corner of the screen. To stop the demonstration, left click on the white square, which signifies “stop”. To manually scroll through the demonstration, hold the left mouse button down and slide the bar on the film strip at the bottom center of the screen.



Rotate:

To rotate the frog, either click on the “**Auto Rotate**” button located in the top right corner of the screen or to manually rotate, hold the right mouse button down and move the mouse in the direction you would like the frog to move. To zoom in and out, use the scroll wheel in the center of the mouse.

At anytime during the use of the simulation, you may click on “**Center Camera**” located at the top right corner to bring the frog back to its original position.

To hide/show the background, click on the “**Show/Hide Background**” button.

Disclaimer: The JTM *Classroom*³® directory, databases, documents, and software are provided “as is” without warranty of any kind, including but not limited to any implied warranties of fitness for any particular purpose or warranty of merchantability. Neither JTM Concepts, Inc. nor its subsidiaries, affiliates, nor any third party that has been involved in the creation, production, or delivery of the *Classroom*³® products and electronic directory warrant that any content on, distributed through, or linked, downloaded, or accessed through the *Classroom*³® electronic directory is accurate, reliable, or correct. JTM Concepts, Inc. makes no representations whatsoever concerning the *Classroom*³® directory, documents, database, or software. The appearance of hyperlinks in the “Teacher Tips” does not constitute endorsement by JTM Concepts, Inc. of this web information, products, or services within.